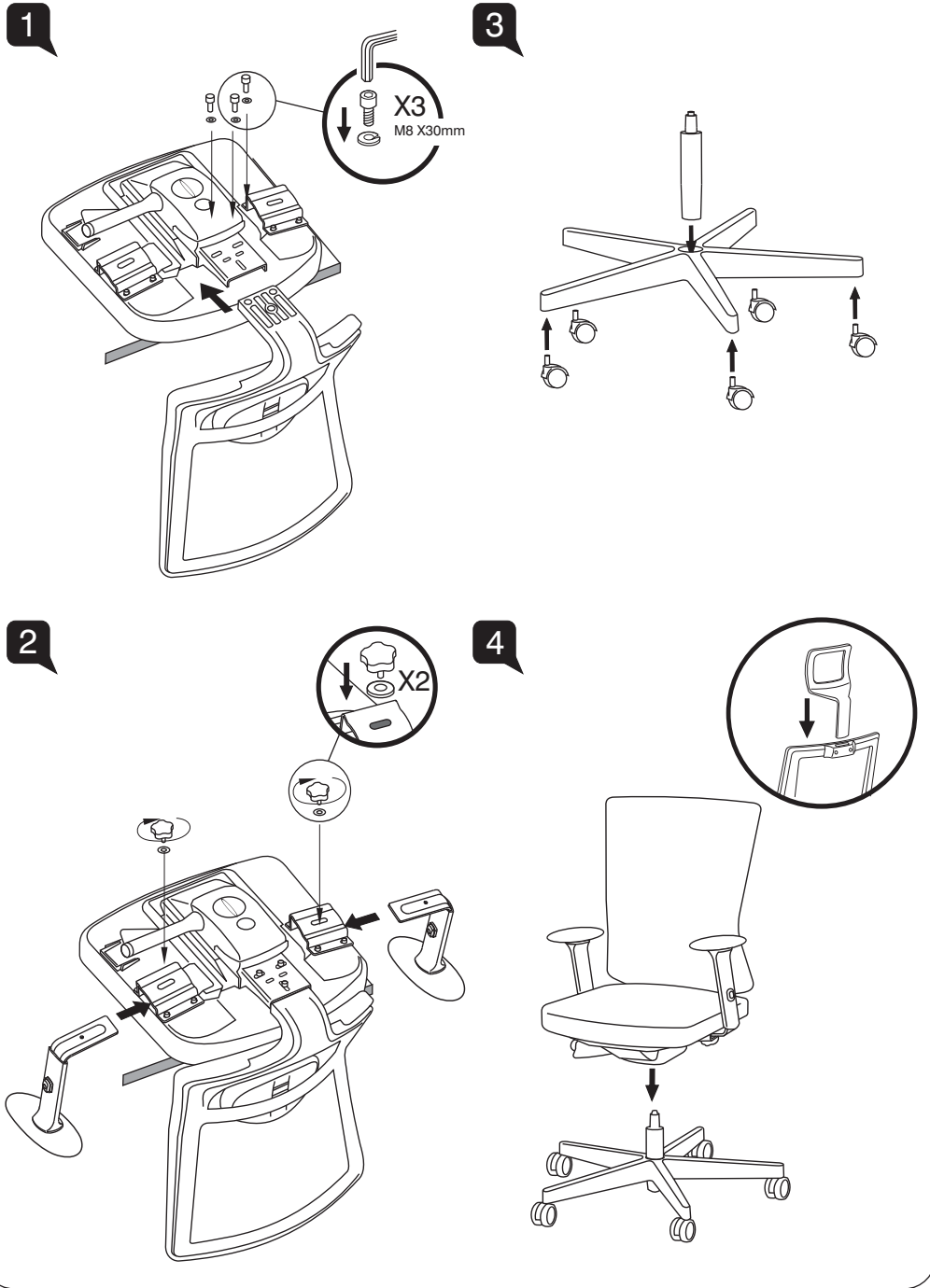


# Assembly Instruction



# FORTE

Models

969 YK A69 NP

968 YK A69 NP

# User Instructions

- A** **Seat Height Adjustable**  
Flip up lever on right-side to raise or lower seat. Adjust such that your feet are adequately supported on floor.
- B** **Recline Free-Range Adjustment**  
Use the dial located on the lower right-side to adjust free-range from 0° to 20° in 4-steps.
- C** **Lumbar Height Adjustment**  
Slide the lumbar support up or down for desired lumbar position.
- D** **Armrest Height**  
Press the button and raise or lower the armrest. Adjust height to adequately support elbows to take strain off shoulders.
- E** **Armrest Width**  
Turn bottom knob clockwise to loosen the armrest and adjust inwards or outwards to suite your shoulder width.
- F** **Armpad Angle**  
Grasp armpads and rotate them inwards or outwards to adjust elbow support to suite specific tasks. An inward position works during keyboard use, while an outward position is recommended during mousing.
- G** **Armrest Depth**  
Grasp armpads and push them forwards and backwards to suite your arm support.
- H** **Seat Depth Adjustment**  
Pull the lever under the right-side of the seat to adjust fore and aft position.
- I** **Headrest Height** *(Only applicable for 969 model)*  
Adjust height by holding both sides of headrest and pull up or down to your desired height.

