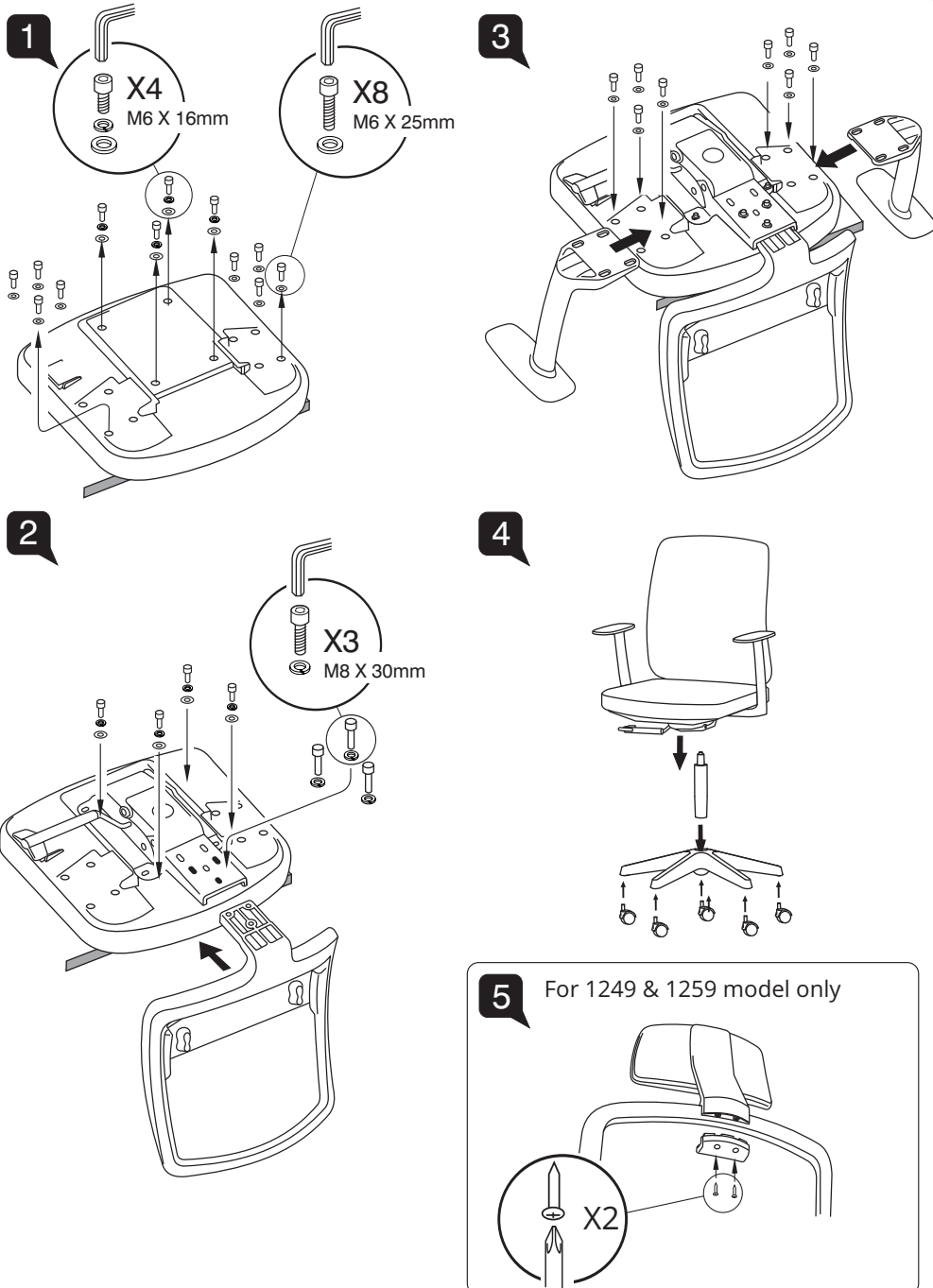


Assembly Instruction

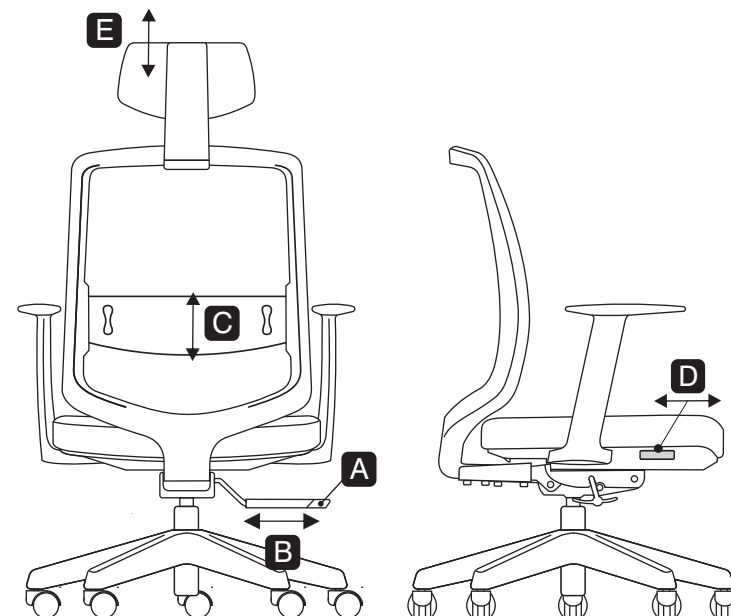


User Instructions

Models

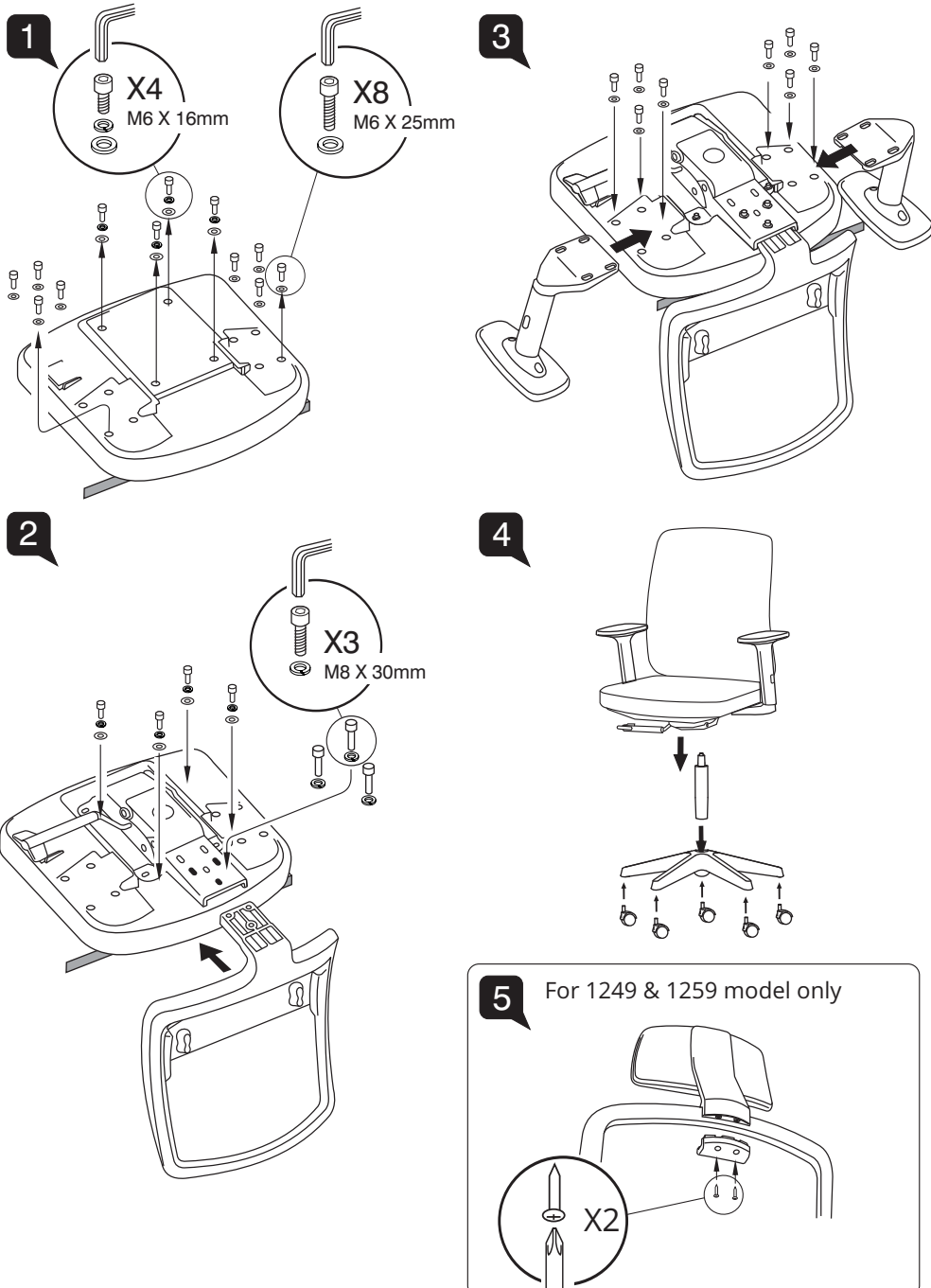
1249 SC A82 N2
1259 SC A82 N2
1248 SC A82 N2
1258 SC A82 N2

- A Seat Height Adjustable**
Flip up lever on right-side to raise or lower seat. Adjust such that your feet are adequately supported on floor.
- B Tilt Lock**
There are 3 locking positions for this model. At upright position or recline to the desired angle and push in lever to lock. Pull out lever to release tilt-lock.
- C Lumbar Height Adjustment** (For 1258 & 1259 Model)
Slide the lumbar support up or down for desired lumbar position.
- E Seat Depth Adjustment**
Pull the lever under the right-side of the seat to adjust fore and aft position.
- D Headrest Height** (For 1249/1259 model)
Adjust height by holding both sides of headrest and pull up or down to your desired height.



MERRYFAIR®

Assembly Instruction

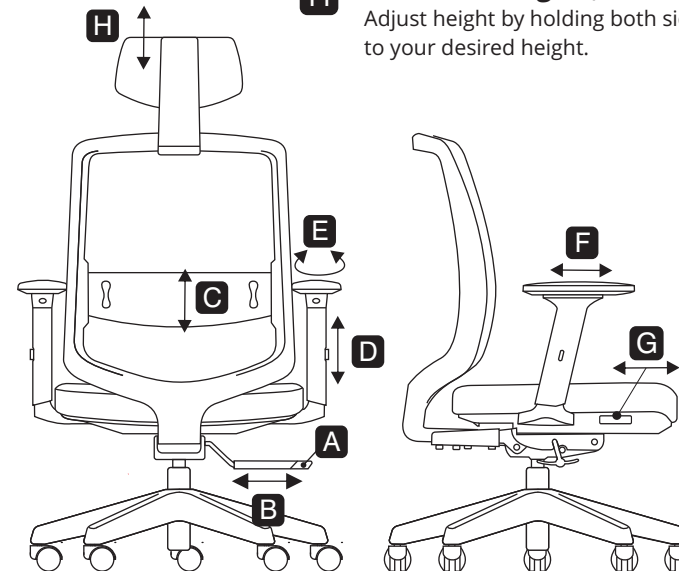


User Instructions

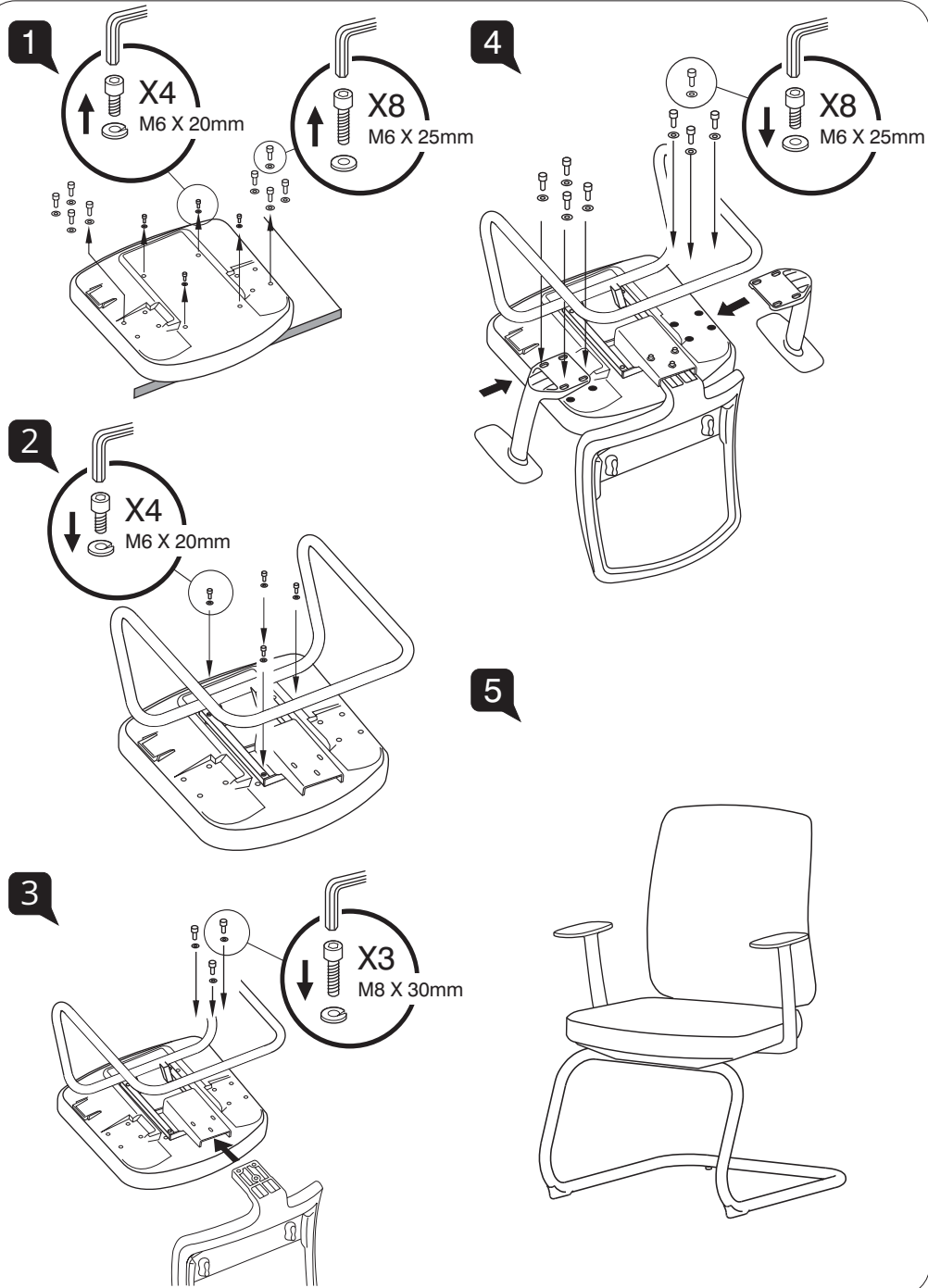
Models

1249 SC A78 N2
1259 SC A78 N2
1248 SC A78 N2
1258 SC A78 N2

- A Seat Height Adjustable**
Flip up lever on right-side to raise or lower seat. Adjust such that your feet are adequately supported on floor.
- B Tilt Lock**
There are 3 locking positions for this model. At upright position or recline to the desired angle and push in lever to lock. Pull out lever to release tilt-lock.
- C Lumbar Height Adjustment (For 1258 & 1259 Model)**
Slide the lumbar support up or down for desired lumbar position.
- D Armrest Height**
Press the button and raise or lower the armrest. Adjust height to adequately support elbows to take strain off shoulders
- E Armpad Angle**
Grasp armpads and rotate them inwards or outwards to adjust elbow support to suite specific tasks. An inward position works during keyboard use, while an outward position is recommended during mousing.
- F Armrest Depth**
Grasp armpads and push them forwards and backwards to suite your arm support.
- G Seat Depth Adjustment**
Pull the lever under the right-side of the seat to adjust fore and aft position.
- H Headrest Height (For 1249/1259 model)**
Adjust height by holding both sides of headrest and pull up or down to your desired height.



Assembly Instruction

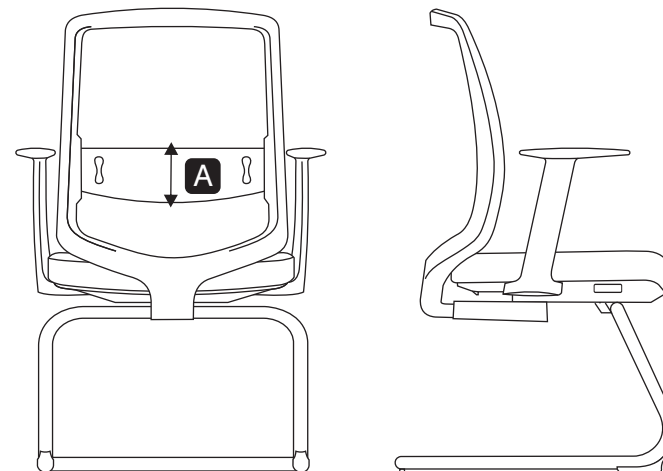


User Instructions

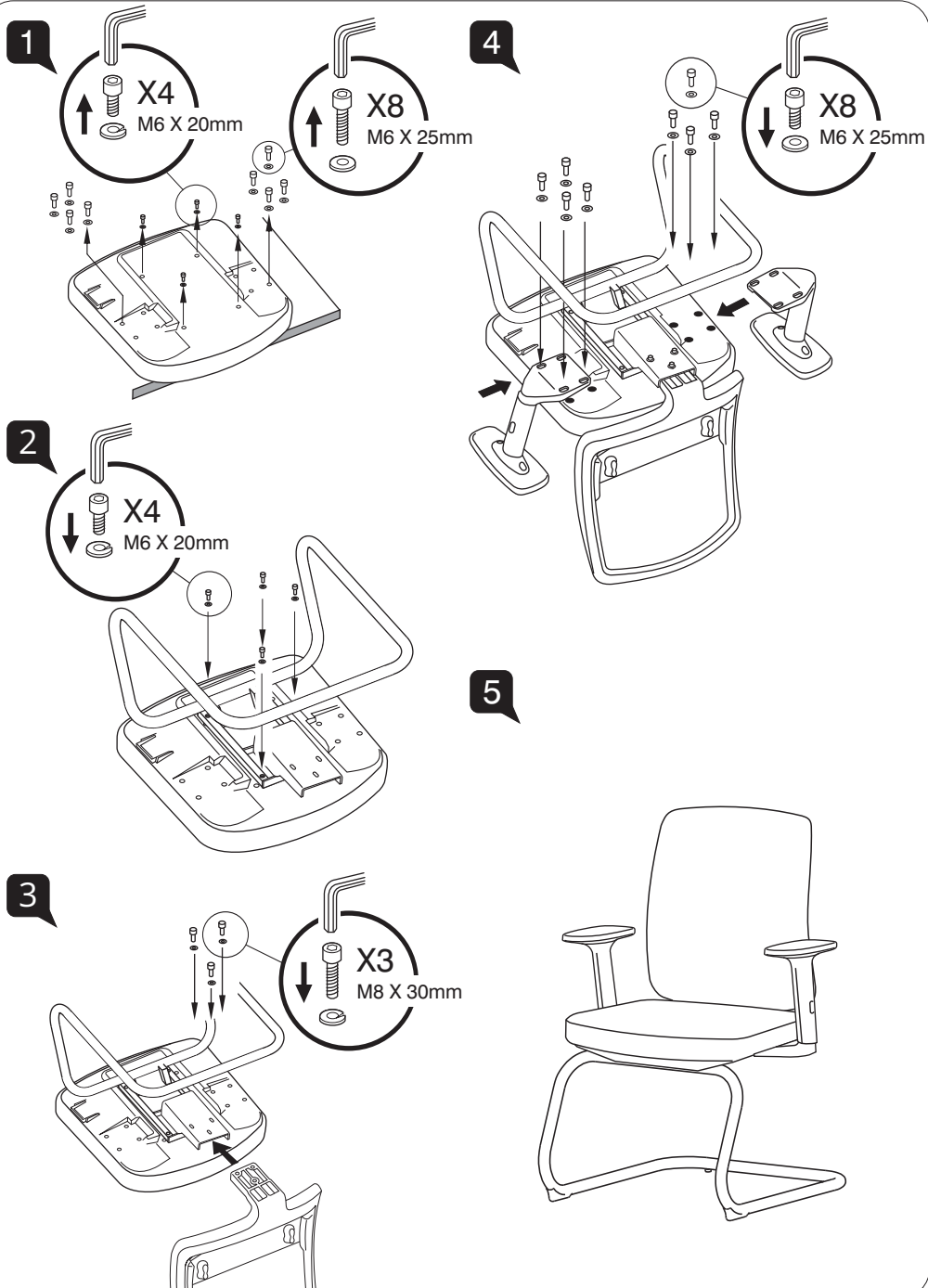
Models

1241 NA A82 B
1251 NA A82 B

- A Lumbar Height Adjustment** (For 1251 Model)
Slide the lumbar support up or down for desired lumbar position.



Assembly Instruction

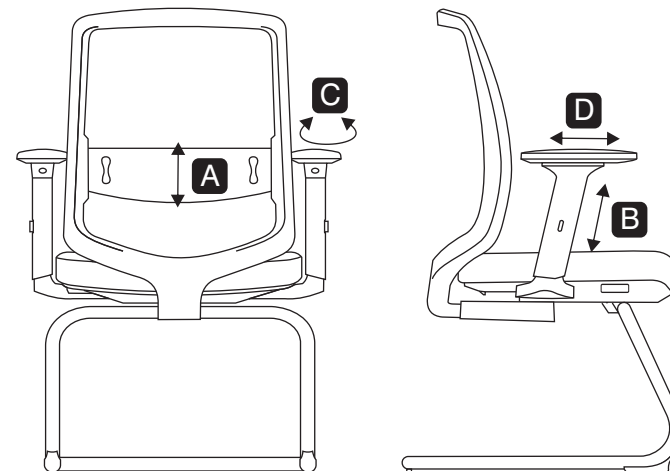


User Instructions

Models

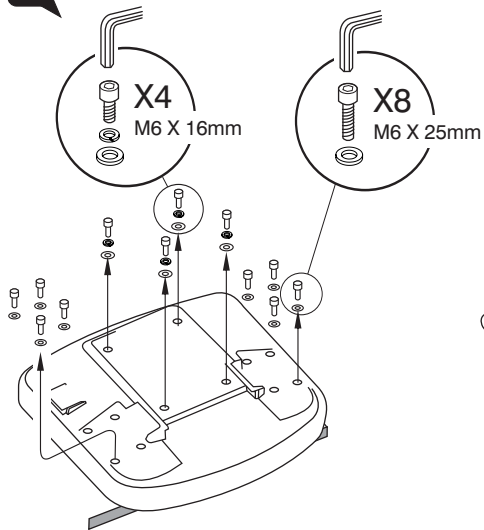
1241 NA A78 B
1251 NA A78 B

- A Lumbar Height Adjustment** (For 1251 Model)
Slide the lumbar support up or down for desired lumbar position.
- B Armrest Height**
Press the button and raise or lower the armrest. Adjust height to adequately support elbows to take strain off shoulders
- C Armpad Angle**
Grasp armpads and rotate them inwards or outwards to adjust elbow support to suite specific tasks. An inward position works during keyboard use, while an outward position is recommended during mousing.
- D Armrest Depth**
Grasp armpads and push them forwards and backwards to suite your arm support.

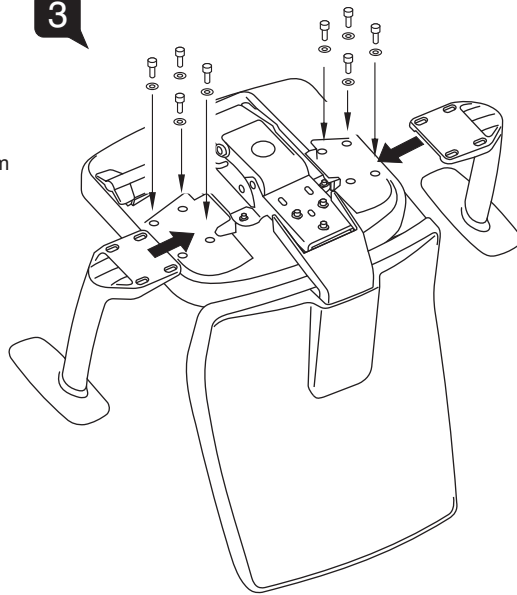


Assembly Instruction

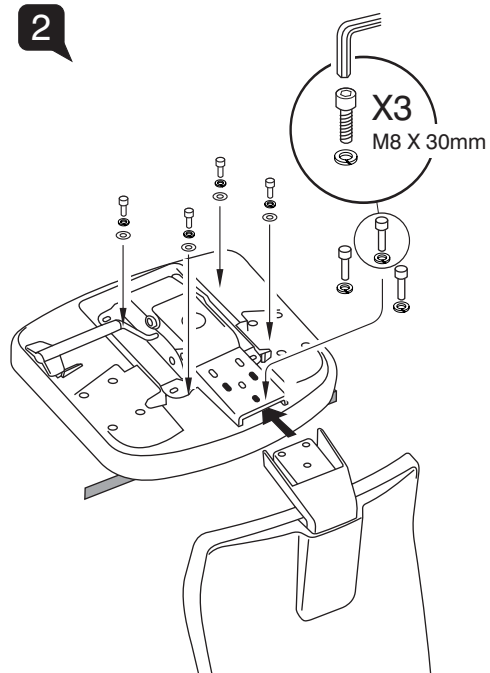
1



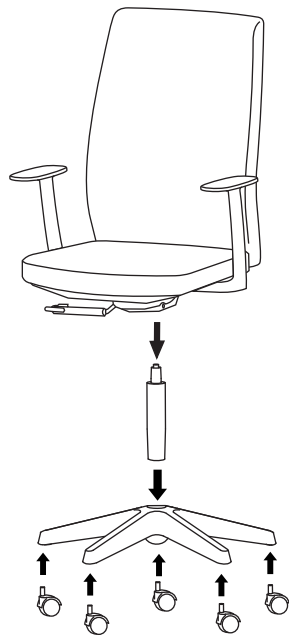
3



2



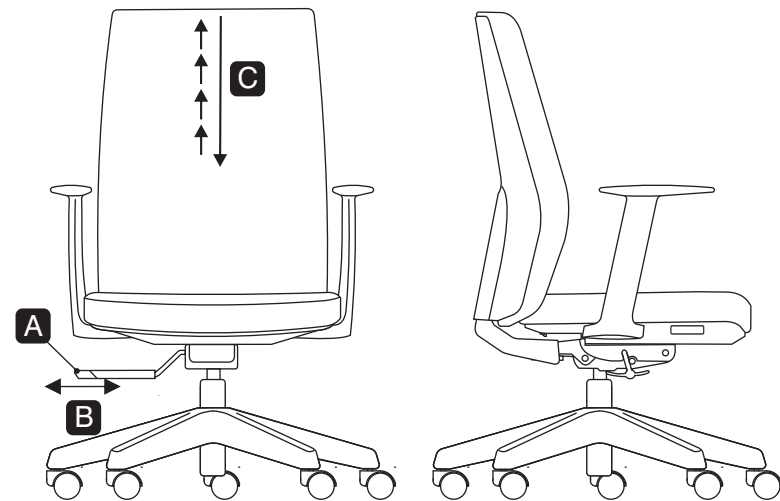
4



User Instructions

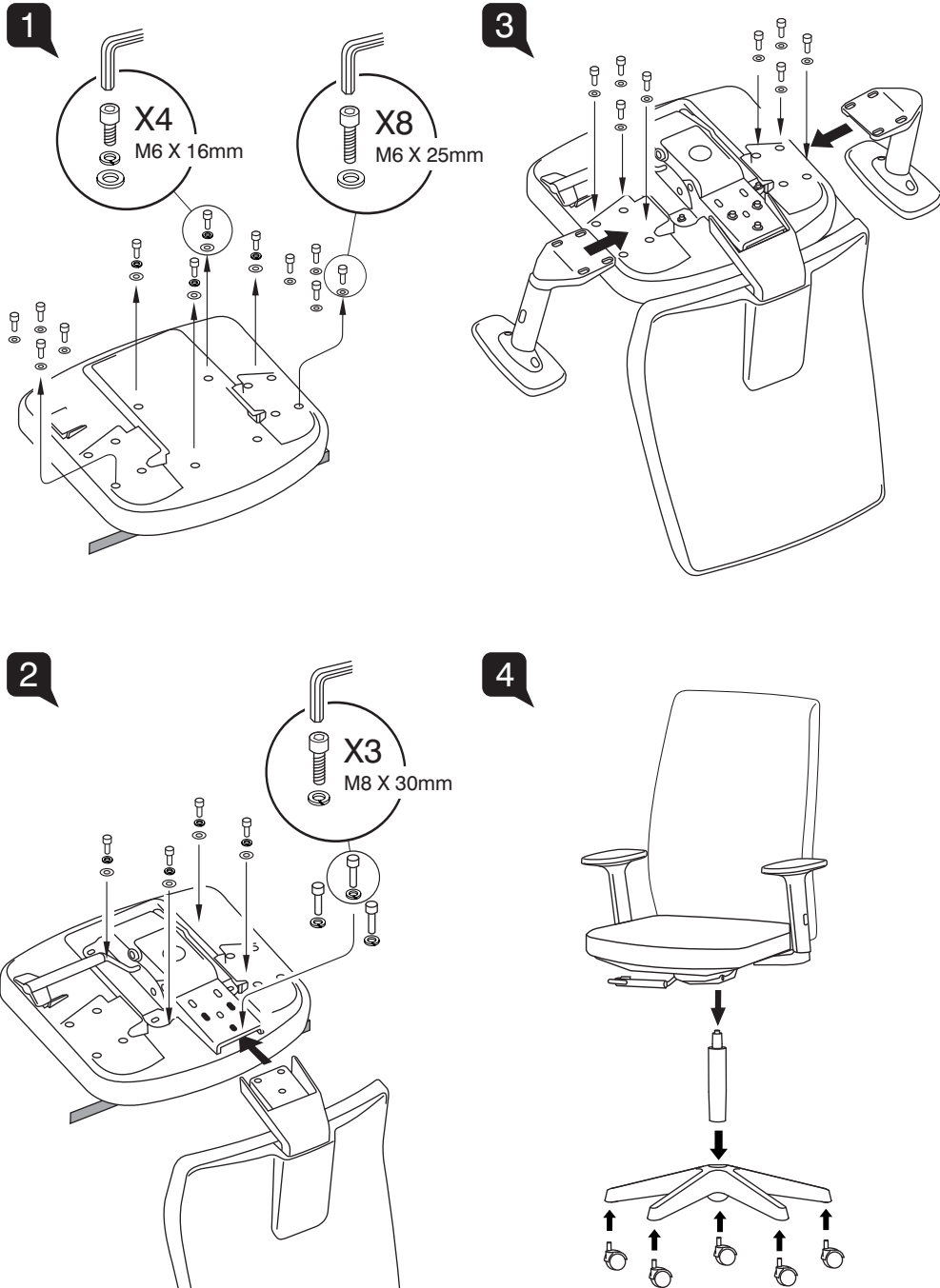
Model
1268 SC A82 N2

- A Seat Height Adjustable**
Flip up lever on right-side to raise or lower seat. Adjust such that your feet are adequately supported on floor.
- B Tilt Lock**
There are 3 locking positions for this model. At upright position or recline to the desired angle and push in lever to lock. Pull out lever to release tilt-lock.
- C Backrest Height**
Hold backrest by both sides and pull up, one step at a time, to desired height. To lower backrest, pull it up till maximum height and then, return it to lowest height to start again. Adjust height so that the backrest curvature follows the curve of your back.



MERRYFAIR®

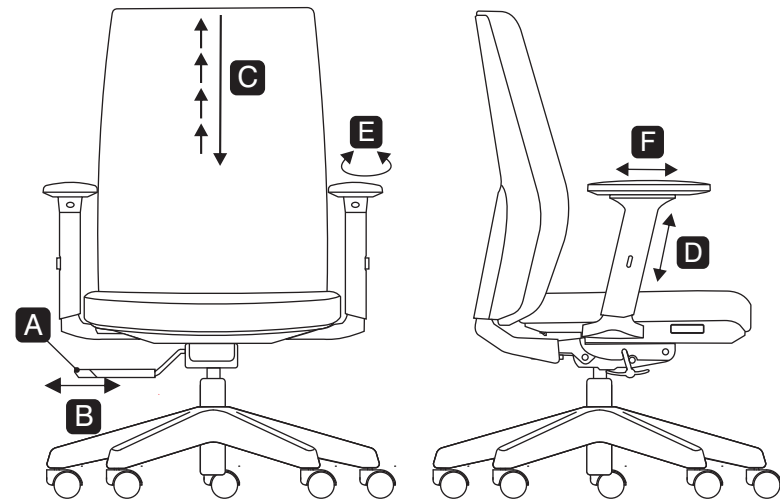
Assembly Instruction



Model
1268 SC A78 N2

User Instructions

- A Seat Height Adjustable**
Flip up lever on right-side to raise or lower seat. Adjust such that your feet are adequately supported on floor.
- B Tilt Lock**
There are 3 locking positions for this model. At upright position or recline to the desired angle and push in lever to lock. Pull out lever to release tilt-lock.
- C Backrest Height**
Hold backrest by both sides and pull up, one step at a time, to desired height. To lower backrest, pull it up till maximum height and then, return it to lowest height to start again. Adjust height so that the backrest curvature follows the curve of your back.
- D Armrest Height**
Press the button and raise or lower the armrest. Adjust height to adequately support elbows to take strain off shoulders
- E Armpad Angle**
Grasp armpads and rotate them inwards or outwards to adjust elbow support to suite specific tasks. An inward position works during keyboard use, while an outward position is recommended during mousing.
- F Armrest Depth**
Grasp armpads and push them forwards and backwards to suite your arm support.



MERRYFAIR®