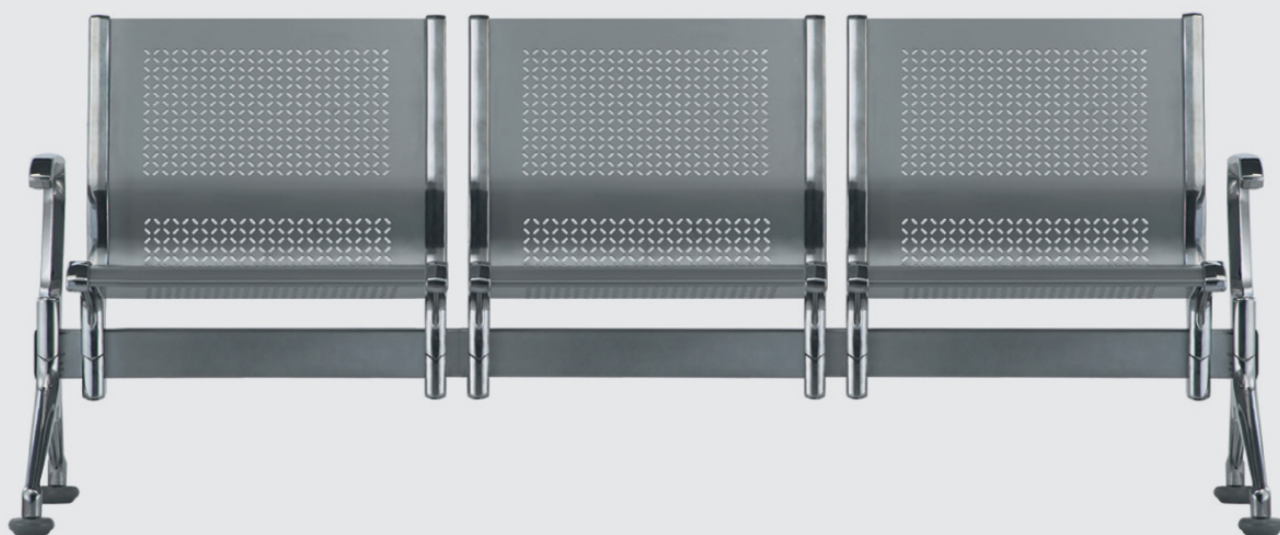


MERRYFAIR®



VOYAGE

Seating Products

Simple Modern Elegance

Voyage is beam-type seating system. It provides a dramatic and durable seating solution for airport, stations, malls and museums.



Appearance

The seats are perforated steel finished in epoxy powder coating for low maintenance.

Sustainability

The seats are mounted on a rectangular steel beam which allows long runs of seating.

Flexibility

Individual seats can be linked together via a swivel joint at any angle with the turn table positioned on top of it.



Voyage are available in two-, three-, four- or more seats according to requirement with steel or cushioned and upholstered seats.

Backrest / Seat Pads

Upholstery pads can be finished in PVC, leather or fabric. Upholstery material bonded to polyurethane foam and coated steel plate as an inner support.

PU integral foam pads are moulded using self skinning Polyurethane foam over an internal plywood shell, black comes as standard. Other colour available, subject to order quantity requirements.

Seat Shell

Formed by 2.0mm cold-rolled steel plate. Seat shell is supported by cast aluminium. Finished in epoxy powder coating.

Swingable Table

Individual benches can be linked together via a swivel joint at any angle with the turn table positioned on top of it.



Side Table

Laminated table top in 18mm thickness, come with PVC edging.

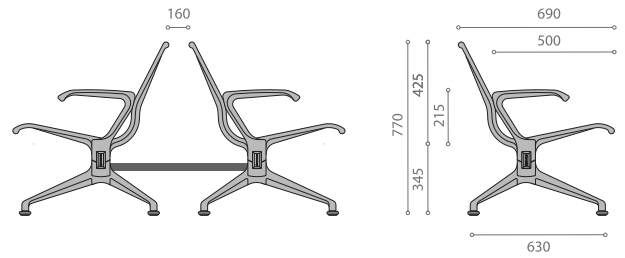
Beams

Rectangular steel hollow section in 76 x 38 x 2.3mm. The finish and the colour will be the same with the body shape.

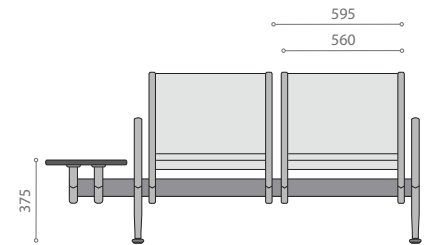
Components

Armrest, leg and frame components are diecast aluminium to combine beauty and durability.

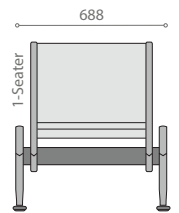
PU Integral Foam
G210



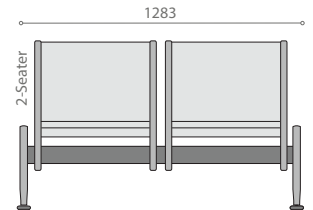
Block-seat
G220



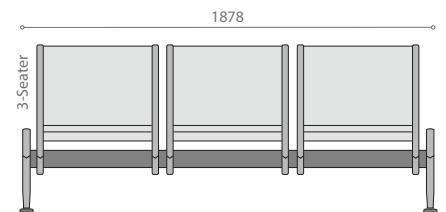
Paragraph-seat
G140



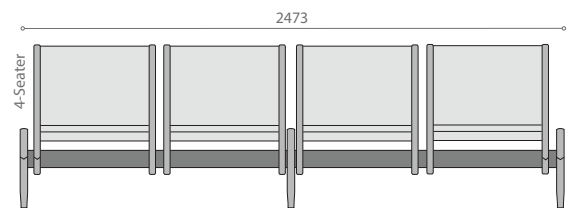
Without padding
G150



With padding
G160



With seat padding
G170



Voyage: Options Accessories



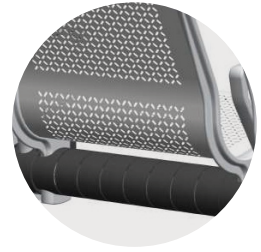
Without Armrest
(A00)



With Armrest
(A28)



USB & Power Outlet Kit
(P3 A)



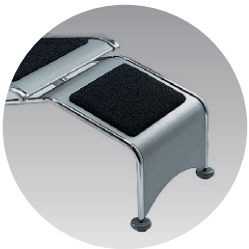
Wire Cover Kit
(P3 B)



Side Table W330 x L510mm
(TS1)



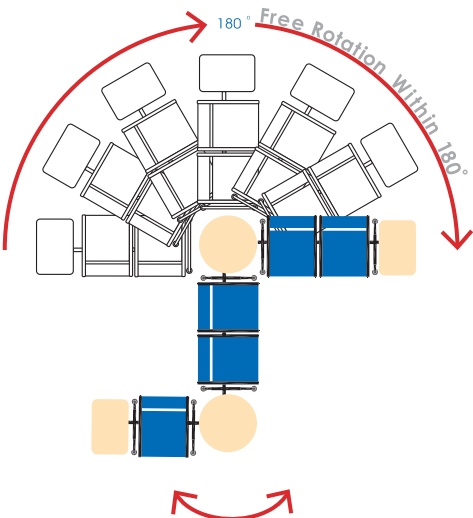
Turn Table Dia. 560mm
(TT1)



Footrest
(FT)



Back to Back Link
(L8)



HEAD OFFICE & FACTORY

www.merryfair.com

Merryfair Chair System Sdn Bhd

(Co. No. 86276-A)
No.2, Jalan Koporat 1/KU9,
Taman Perindustrian Meru,
42200 Klang, Selangor D.E., Malaysia.

International Sales & Marketing

Tel. +603 3393 2888
Fax. +603 3393 2000
enquiry@merryfair.com

Domestic Sales & Marketing

Tel. +603 3393 6868
Fax. +603 3393 6888
domestic@merryfair.com

SHOWROOM OFFICE

Merryfair Marketing Sdn Bhd

(Co. No. 665054-V)
No. 82-84, Jalan 2/23A,
Jalan Genting Kelang,
53300 Kuala Lumpur, Malaysia.
Tel. +603 4149 8899
Fax. +603 4143 0113

REGIONAL OFFICE & SHOWROOM

美力菲 (中国) 家具有限公司

广东省佛山市顺德区容桂华口顺德高新区(容桂)华天路21号
邮编: 528306

Merryfair (China) Co.,Ltd
No. 21, Huatian Road, Shunde High Tech Industrial Zone
(Ronggui), Huakou Community, Ronggui Subdistrict,
Shunde District, Foshan City, Guangdong, China 528306.
Tel. +86 757 2636 9861
Fax. +86 757 2881 9700
domestic@merryfair.com.cn

Merryfair (Singapore) Pte Ltd

33 Ubi Avenue 3, #01-52/53 Vertex,
Singapore 408868.
Tel. +65 6284 9098
Fax. +65 6284 9028
enquiry@merryfair.com.sg

Merryfair (Thailand) Co.,Ltd.

19/1-2 Sithakarn, Soi Chidlom
Lumpini, Pathumwan
Bangkok 10330 Thailand
Tel : +66 2254 1588
Fax : +66 2254 1585
sales@merryfair.co.th

